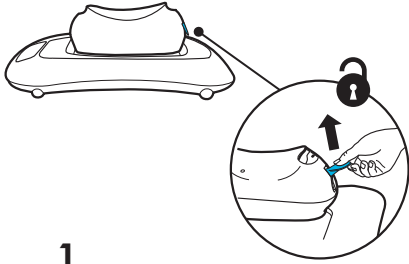
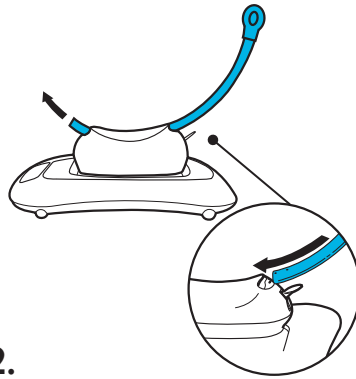


## Assembly



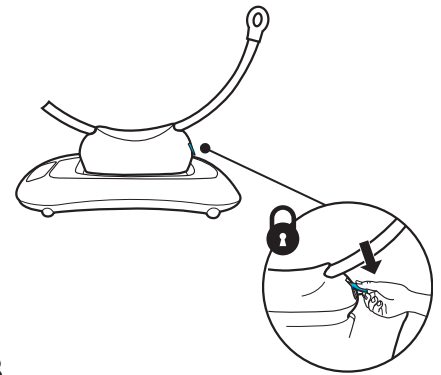
1.

Unlock Seat Recline Switch.



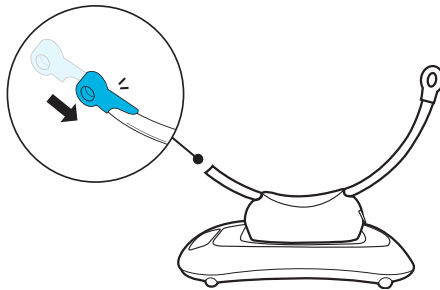
2.

Slide Center Support Tube through the back of the base.



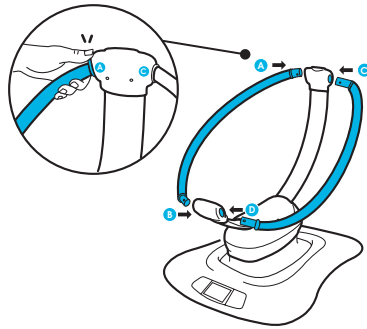
3.

Lock the Seat Recline Switch.



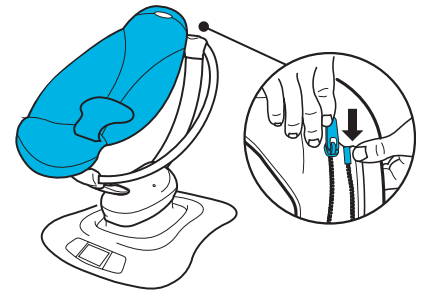
4.

Install the Front End Cap until you here a "click" and it can no longer be removed.



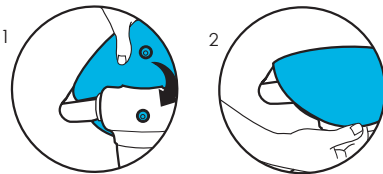
5.

Press the Side Rails into the End Caps until you hear a "click" and they can no longer be removed.



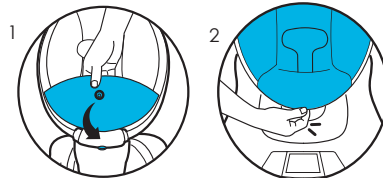
6.

Zip in the fabric.



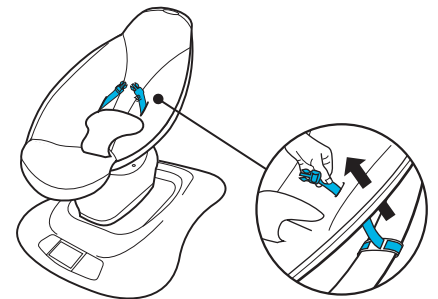
7.

Pull top of fabric over the toy bar opening and snap into place.



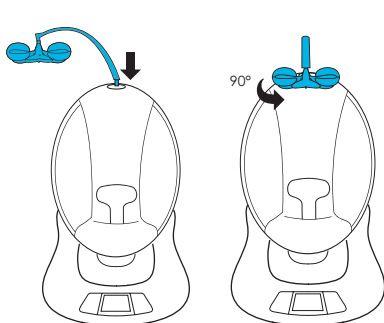
8.

Pull the bottom of the fabric down and snap into place.



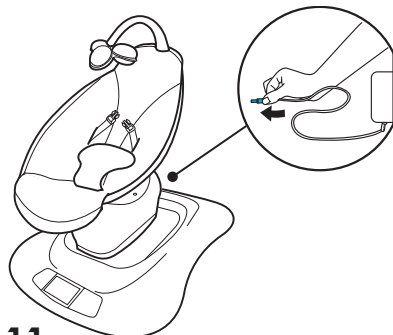
9.

Thread Child Restraint Harness through the back of the fabric.



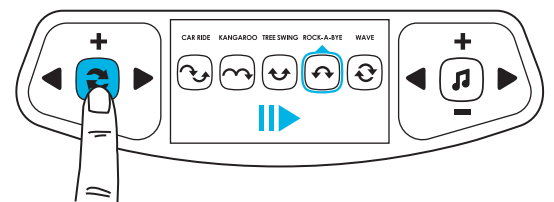
10.

Install the Toy Bar by inserting the bar sideways and turning 90° so it is facing forward.



11.

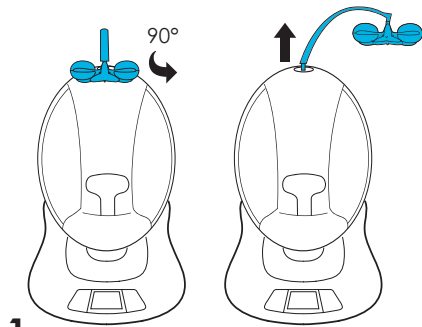
Once assembled, plug into power supply.



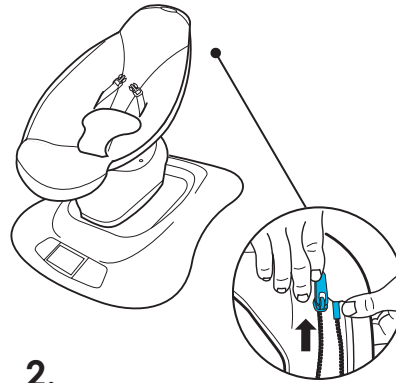
12.

Start the motion by pressing the Play button.

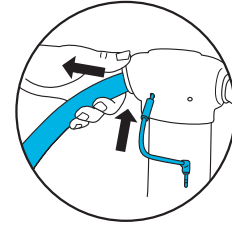
# Disassembly



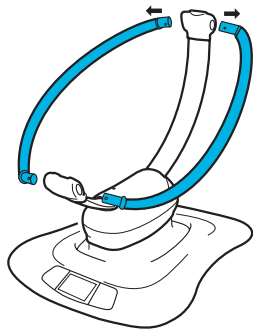
**1.**  
Remove the Toy Bar. Turn 90° so it is facing sideways, then remove.



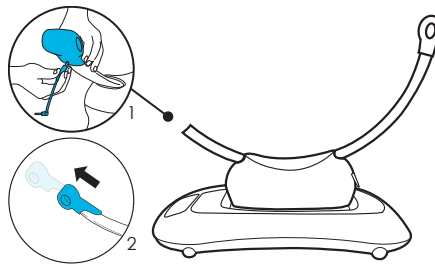
**2.**  
Remove the fabric. Unzip the fabric. Unsnap the fabric at the top and bottom.



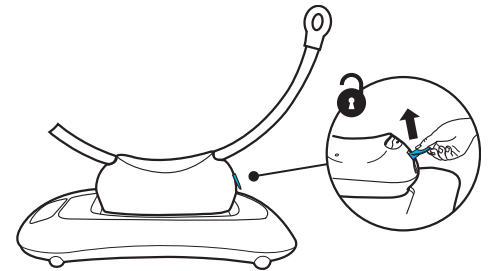
**3.**  
Use the MP3 cord to depress the ball lock on the underside of the Top and Bottom End Cap.



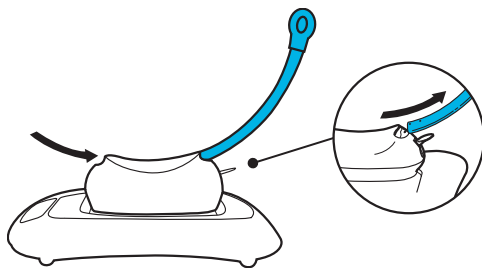
**4.**  
Remove the Left and Right Side Rails.



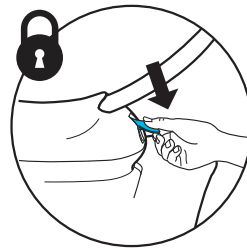
**5.**  
Use the MP3 cord to depress the ball lock on the underside of the Bottom End Cap. Remove the End Cap.



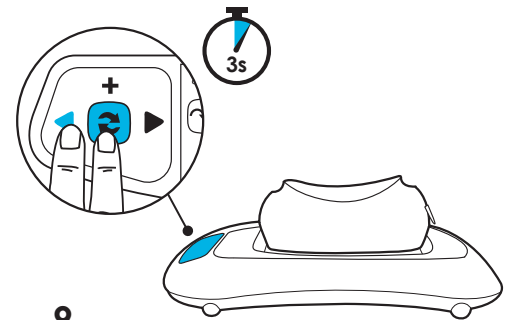
**6.**  
Unlock the Seat Recline Switch.



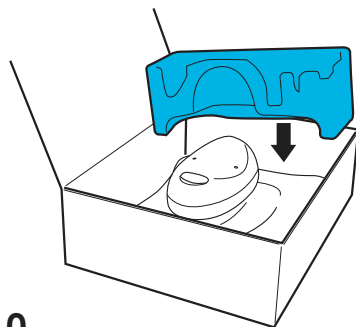
**7.**  
Slide the Center Support Tube out of the Base.



**8.**  
Lock the Seat Recline Switch.



**9.**  
To fit back in the box, press and hold the Play and Left Arrow buttons for 3 seconds.



**10.**  
Place Base in the box and then cover with packaging materials.